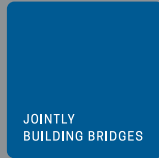


Sticky Bone

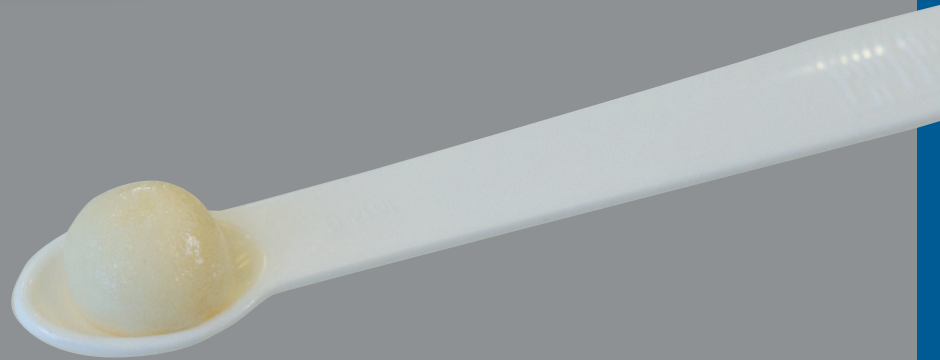
ALLOGRAFT C+TBA GRANULAT + HyA



Allograft C+TBA Granules+HyA consists of 60% allogenic bone granules and 40% sodium hyaluronate powder (HyA). By adding WFI or 0.9% NaCl solution, the sodium hyaluronate develops pasty properties and connects the bone particles. The allogenic bone granules are easier to handle in the paste and stay in situ after application.

Allograft C+TBA Granules+HyA

Tissue Origin: Human
Composition: Allogenic bone tissue and sodium hyaluronate
Processing: Allotec® purification procedure
Inactivation: Min. SAL 10⁻⁶ for viruses and bacteria
Sterilisation: Gamma irradiation
Application: Bone void filler
Rehydration: Mixing with WFI or NaCl solution.



ORDER INFORMATION

DESCRIPTION	GRAIN SIZE [mm]	ITEM NUMBER	VOLUME [cc/ml]
Cancellous Granules 0,25-1mm (S) + HyA	0,25-1	ALO535	1,0
		ALO536	2,0
		ALO537	5,0
		ALO538	10,0
Cortico-cancellous Granules 0,25-1mm (S) + HyA	0,25-1	ALO530	1,0
		ALO531	2,0
		ALO532	5,0
		ALO533	10,0
Granules <0,25mm (XS) + HyA	< 0,25	ALO540	1,0
		ALO541	2,0
		ALO542	5,0
		ALO543	10,0



**Cells + Tissuebank Austria
gemeinnützige GmbH**

Magnesitstraße 1
A-3500 Krems an der Donau

+43 2732-76954-0
+43 2732-76954-60

office@ctba.at
www.ctba.at